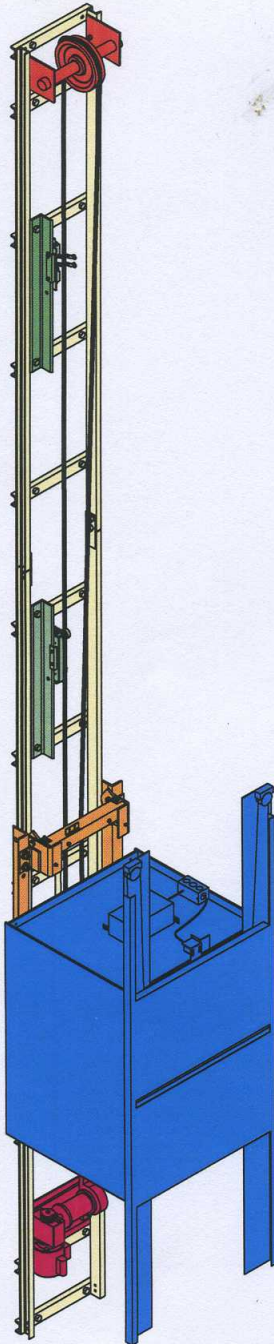


HEAVY-DUTY DUMBWAITER EQUIPMENT ILLUSTRATION

*HomeFlyer*TM
LEVRE HDTM

HEAVY DUTY
DUMBWAITER



CAPACITY - 200 LB., 300 LB. or 500 LB.

TRAVEL - up to 50 ft.

STOPS - up to 6 stops.

SPEED - 50 feet per minute

OVERHEAD - 1'6" minimum, 2' recommended above top of car (additional overhead required for car gates or overhead machine configurations).

LOADING HEIGHT - 36" minimum when machine is "rail mounted" below car (overhead or remote machine location and/or pit, required for loading heights below 36").

GUIDE RAILS - heavy gauge steel channel.

ELECTRIC SUPPLY - 230 volts, single phase standard. 208/230/460 volts, three phase, available. For 208 volts, single phase, a Buck Boost transformer must be added.

POWERHEAD - single speed winding drum with 1HP or 2 HP motor.

BRAKE - electromagnetic disc brake, electrically released and spring applied.

CONTROLS - momentary contact call/send push buttons at each landing.

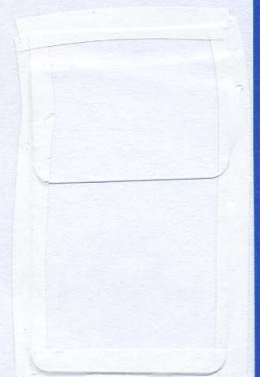
SAFETIES - twin instantaneous broken cable, applied by a retained compression spring.

CABLE - 3/16" or 7/32" diameter steel cable.

HOISTWAY DOOR INTERLOCKS - required at each landing.

EMERGENCY LOWERING - manual hand crank.

Paca-Waiter Series 011
As Manufactured for
Integrity Group Cos., Inc. by
Waupaca Elevator Co., Inc.



HomeFlyer™

LEVRE HD™

SPECIFICATION

HEAVY DUTY
DUMBWAITER

HomeFlyer™ Levre HD™

1. Capacity: 300 lbs. (200 and 500lb models also available)
2. Standard Car size:
 - a. Width: 30 inches.
 - b. Depth: 30 inches.
 - c. Height 40 inches.
3. Maximum Travel: 50 feet.
4. Stops: Up to 5
5. Standard Loading Height: 36 inches.
6. Speed: 50 feet per minute.
7. Voltage (Standard): 230 VAC.
8. Motor HP: 2 hp.
9. Power Requirements:
 - a. 230 Volt, 30 Amp, Single Phase, 60 Hertz with 20 amp time delay fuse.
 - b. A separate manual disconnect circuit is required.
10. Interlocks (required): Included at each opening.
11. Metal Car/Car Gates:
 - a. Material Steel shop painted.
 - b. Material Stainless Steel.
 - c. Bi-parting steel gate and shelves shop painted.
 - d. Bi-parting stainless steel gate and shelves.
12. Hoistway Doors and Frames:
 - a. Doors and Frames: Bi-parting steel door shop painted.
 - b. Doors and Frames: Bi-parting stainless steel door.
13. Brake: electromagnetic disc brake, electrically released and spring applied.
14. Cable: 3/16 inch (4.76 mm) diameter steel cable.
15. Slack Cable Device.
16. Top Final Limit Switch.
17. UL Certified Controller.
18. Call-Send Stations: Momentary contact call/send push buttons at each landing.
19. Emergency Lowering: manual hand crank.
20. Options
 - a. Car light.
 - b. Car Here indicator.
 - c. In-Use Indicator.
 - d. Door Open Buzzer.
 - e. Lantern and Gong.
21. Clearance: Provide the following clearance for the machine configuration required:
 - a. Machine Below Car: 1/2 car height plus 8 inches above top of car with 36 inch minimum loading height.
 - b. Machine Overhead Car: 48 inches above top of car with 6 inch minimum loading height.
 - c. Remote Machine: 1/2 car height plus 8 inches above top of car with 6 inch minimum loading height.

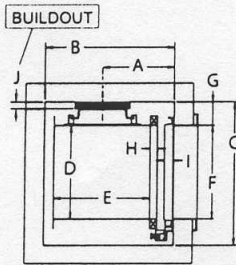
Paca-Waiter Series 011
As Manufactured for
Integrity Group Cos., Inc. by
Waupaca Elevator Co., Inc.

HomeFlyer™

LEVRE HD™

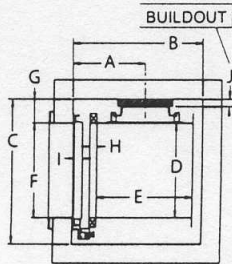
HOISTWAY FLOORPLAN LAYOUT

HEAVY-DUTY CAR WITH VERTICALLY BI-PARTING CAR AND LANDING DOORS



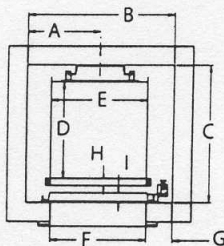
RIGHT OPENING (AB)

Dumbwaiter Type	GATED DUMBWAITER WITH COMMERCIAL DOOR										
	Car Size	Finished Hoistway Dimensions									
Right Opening		A	B	C	D	E	F	G	H	I	J
200 lbs.	26"x26"x36"	18"	33"	36.5"	26"	26"	26"	5"	1.5"	2"	.75"
300 lbs.	30"x30"x40"	20"	37"	40.5"	30"	30"	30"	5"	1.5"	2"	.75"
500 lbs.	36"x36"x48"	23"	43"	46.5"	36"	36"	36"	5"	1.5"	2"	.75"



LEFT OPENING (DC)

Dumbwaiter Type	GATED DUMBWAITER WITH COMMERCIAL DOOR										
	Car Size	Finished Hoistway Dimensions									
Left Opening		A	B	C	D	E	F	G	H	I	J
200 lbs.	26"x26"x36"	18"	33"	36.5"	26"	26"	26"	5"	1.5"	2"	.75"
300 lbs.	30"x30"x40"	20"	37"	40.5"	30"	30"	30"	5"	1.5"	2"	.75"
500 lbs.	36"x36"x48"	23"	43"	46.5"	36"	36"	36"	5"	1.5"	2"	.75"



FRONT OPENING (CB)

Dumbwaiter Type	GATED DUMBWAITER WITH COMMERCIAL DOOR									
	Car Size	Finished Hoistway Dimensions								
Front Opening		A	B	C	D	E	F	G	H	I
200 lbs.	26"x26"x36"	18"	36.5"	35.25"	26"	26"	26"	5.5"	1.5"	2"
300 lbs.	30"x30"x40"	20"	40.5"	39.25"	30"	30"	30"	5.5"	1.5"	2"
500 lbs.	36"x36"x48"	23"	46.5"	45.25"	36"	36"	36"	5.5"	1.5"	2"

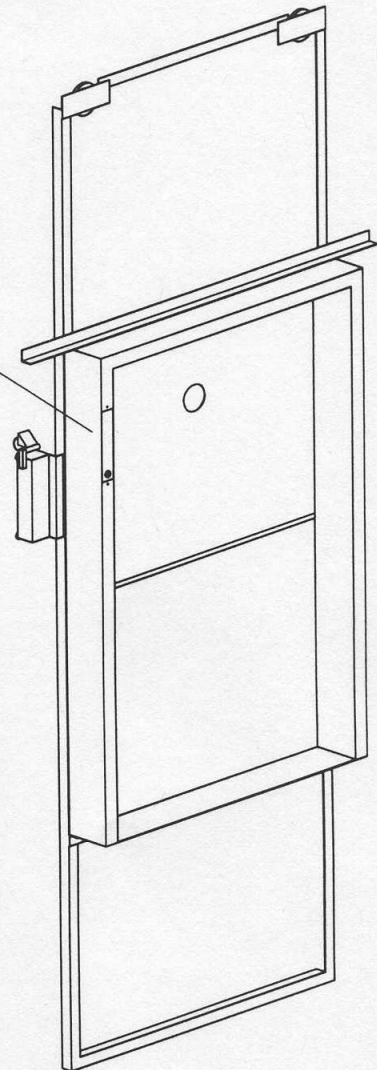
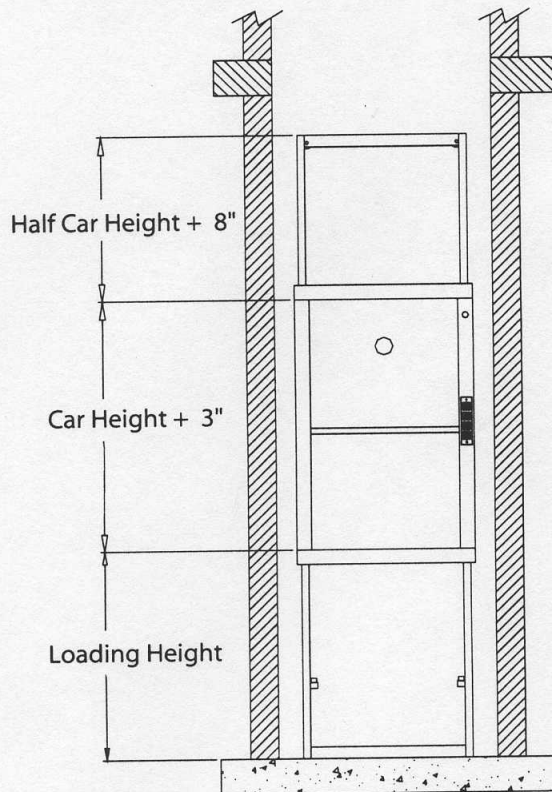
Paca-Waiter Series 011
As Manufactured for
Integrity Group Cos., Inc. by
Waupaca Elevator Co., Inc.

HomeFlyer™

LEVRE HD™

HEAVY DUTY
DUMBWAITER

BI-PARTING
DUMBWAITER DOORS



Note:

Recommended to leave entire hoistway
wall open for door installation

Vertically Bi-Parting Landing Door Illustration

Paca-Waiter Series 011
As Manufactured for
Integrity Group Cos., Inc. by
Waupaca Elevator Co., Inc.

Hoistway Illustrations - Dumbwaiters

